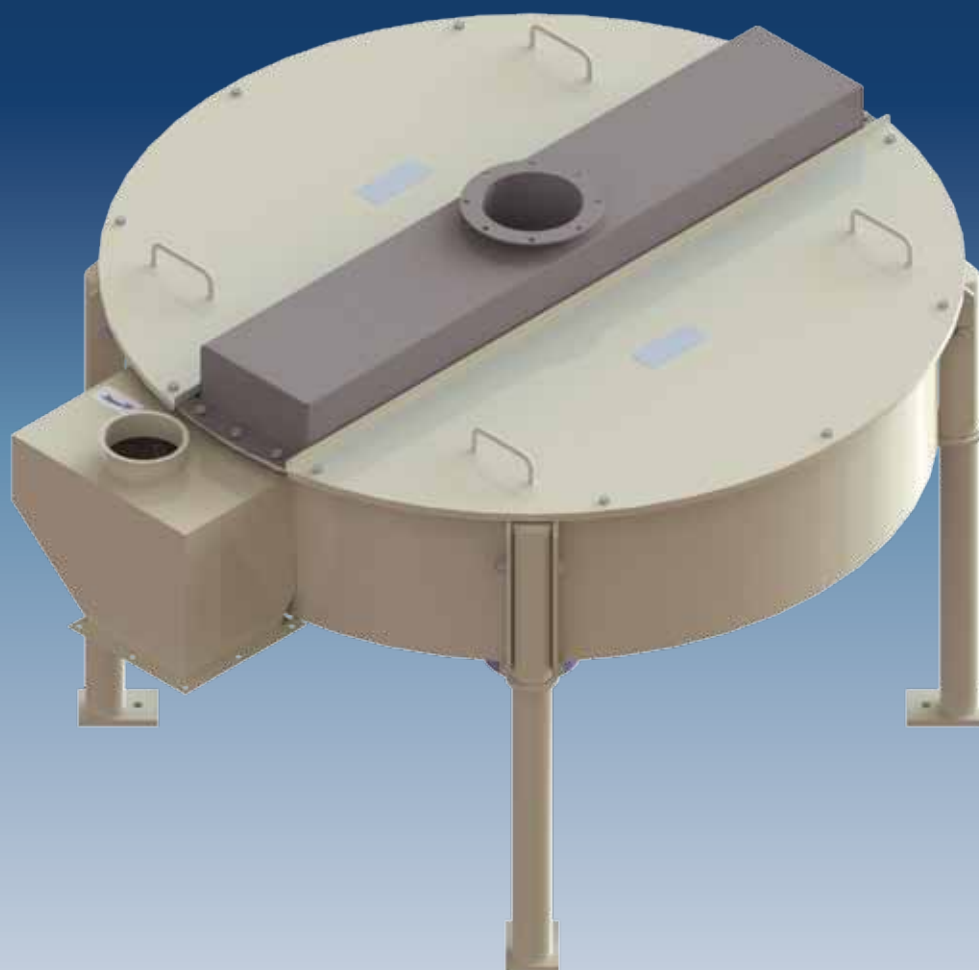


Circular centrifugal sifters

PTA



STOLZ circular centrifugal sifters are used to provide a centrifugal segregation for:

- Sieving before grinding.
- Safety sieving after grinding and before mixing.
- Pellets sieving for fines and broken grains extraction.

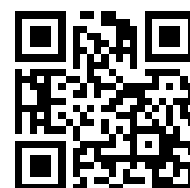
Options:

- Side outlet with deflector,
- Large wastes grid and outlet,
- Atex area 22

contact@stolz.fr • www.stolz.fr

Stolz

desmet ballestra



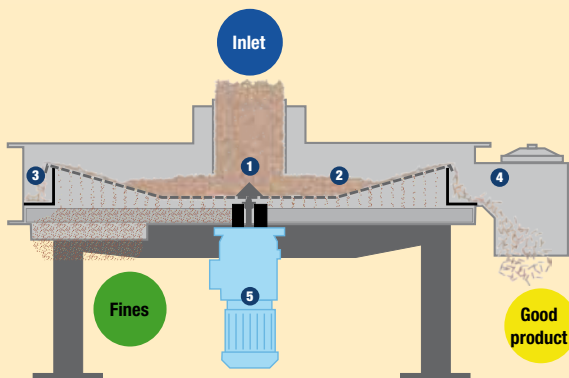
Circular centrifugal sifters PTA

Features and options

Features

- Sealed machine with circular movement for a segregation by centrifugal force
- Suitable for all types of pellets or dry grains sieving
- Internal flow adjustment at inlet
- Scrapping bottom with fines outlet
- Rotor with scrapping blades assembled at end shaft of a vertical gear-motor
- Screen mesh according to material specifications

Operating principle



Material to be sieved is introduced at inlet.

A cone ① dispatches the product over the rotary sieving screen ②.

By a centrifugal effect, the product layer slides to the edge while dropping out the fines parts : flour, crumbs...

The sieved product then falls into a circular «passage» ③, then into the «good product» outlet ④.

After crossing the screen the fines are collected on the scrapping bottom by scrappers and are rejected to the «fines» outlet.

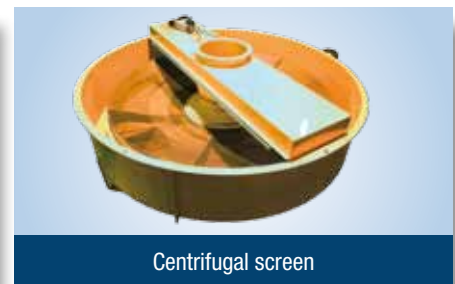
The rotor is driven by a gear-motor ⑤ located in the centre with a shaft directly supporting the rotor.



Circular centrifugal sifter



Product inlet



Centrifugal screen

Type	Usual reached capacities		Number of screens
	Pellets	Pellets	
	Ø4 mm	Ø8 mm	
	SW 0.5	SW 0.5	
PTAA 16	12 t/h	25/50 t/h	1
PTAA 25	25 t/h	80/100 t/h	1
PTAV 20	50 t/h	50/75 t/h	1
PTAV 25	100 t/h	80/100 t/h	1
PTAV 225	100 t/h	80/100 t/h	2
PTAVP 25	80/100 t/h	50/80 t/h	1
PTAP 30	150/180 t/h	120/150 t/h	1

Stolz

desmet ballestra

contact@stolz.fr • www.stolz.fr