

Pellet mill

LYDERIC



The pellet mill is designed to process a powdery product into pellets through the combined action of heat, moisture, and compression.

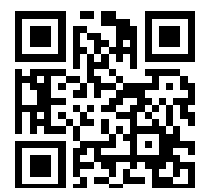
Features

- Driven by belt
- Single or dual transmission
- Robust and reliable
- High capacities
- Very good value for money
- Low maintenance costs
- Options flexibility

contact@stolz.fr • www.stolz.fr

Stolz

desmet ballestra



Pellet mill LYDERIC

Options and safety devices

Options

- Product chute with by-pass flap
- Dual transmission (DT)
- Special unclogging ring on hollow shaft
- Flap box under outlet

Safety devices

- Micro contacts on doors
- Shearing pin
- Static magnet
- Belt slipping control on transmission belts
- Clogging detection



Tipping
unclogging chute

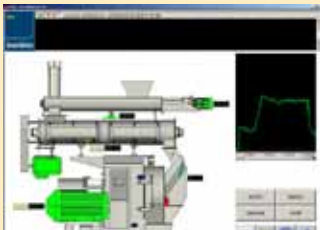


Electrical safety device
on doors



Magnet
on feed chute

Regulation



Supervision de ligne
de granulation

STOLZ offers a system guaranteeing automation, supervision, and control of the pelleting lines components.

That system is provided with the following capabilities :

- Formula control,
- Load and temperature monitoring,
- Self-adapting variations intensity,
- Additives injection control,
- Dies control,
- Accessibles parameters with password,
- Loading shapes and regulation can be linked to formulas.
- Remote maintenance



Fixed knives
supports



Pellet
knife



Built-in winch
for die handling

Range	Die Ø	Die width / useful width	Motor power	Motor speed	Die speed	Linear speed	Working area	Approx. capacity
	mm	mm	kW	rpm	rpm	m/s	dm ²	t/h
Lyderic 40.10	400	175/99	55/75	1000	281	5,8	12,4	4 to 5
Lyderic 40.13	400	220/129	90/110	1000	281	5,8	16,2	5 to 6
Lyderic 52.14	520	182/138	132	1000	254	6,9	22,5	7 to 9
Lyderic 52.18	520	222/178	160	1000	254	6,9	29,1	8 to 11
Lyderic 66.18	660	236/178	200	1000	214	7.4	36.9	10 to 14
Lyderic 66.18 DT*	660	236/178	200	1500/1000	142/214	4.9/7.4	36.9	10 to 14
Lyderic 66.23	660	286/230	200/250	1000	214	7.4	47.7	13 to 18
Lyderic 66.23 DT*	660	286/230	200/250	1500/1000	142/214	4.9/7.4	47.7	13 to 18

*DT = Dual Transmission



contact@stolz.fr • www.stolz.fr